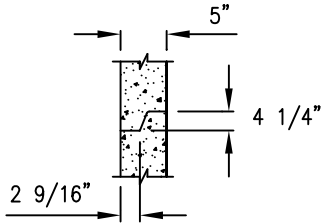


JEFFERSON CONCRETE CORP.

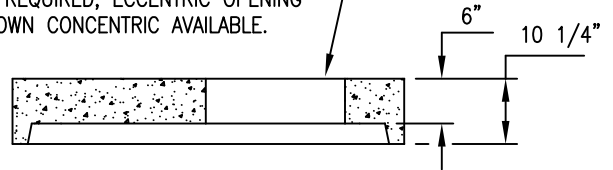
22850 MURROCK CIRCLE
 WATERTOWN, NY 13601
 TEL (315)788-4171 FAX (315)788-7958
 www.jeffersonconcrete.com

48" BENCHED MANHOLE NON-EXTENDED BASE

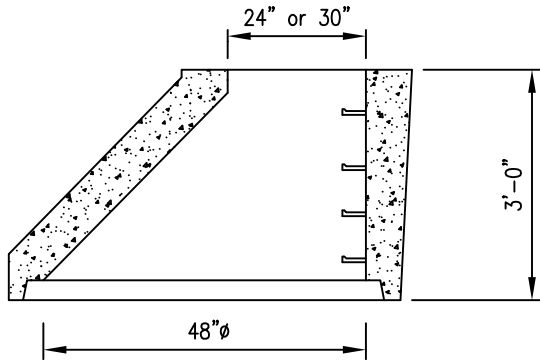


Joint Detail

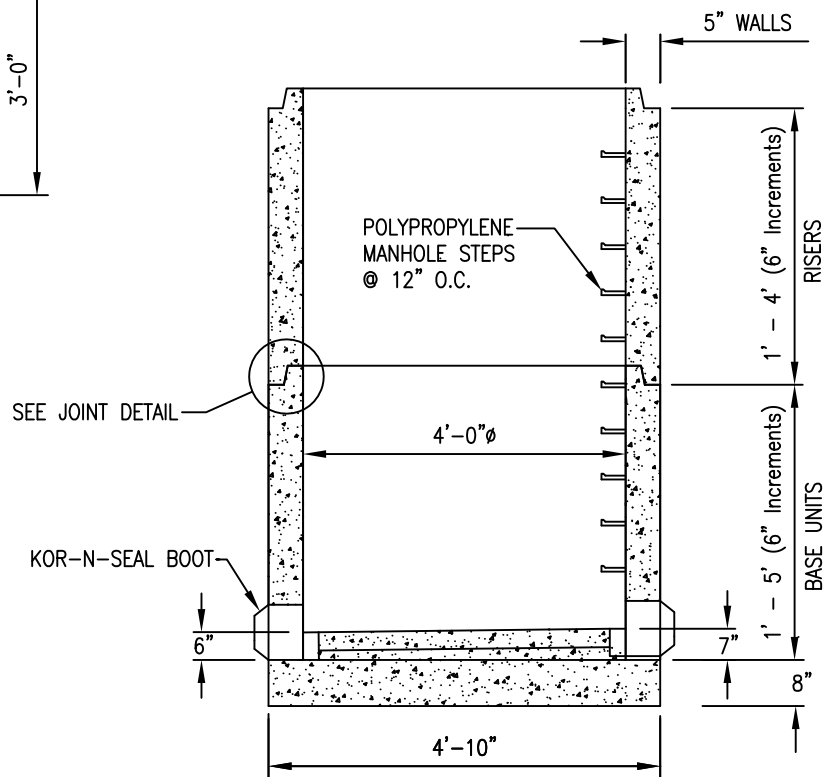
STANDARD 2'-0" DIA. OPENING OR
 AS REQUIRED, ECCENTRIC OPENING
 SHOWN CONCENTRIC AVAILABLE.



Flat Slab Cover



Eccentric Cone



Section

GENERAL NOTES:

DESIGNED IN ACCORDANCE TO ASTM C478 WITH AASHTO HS 20 LOADING
 JOINTS SEALED IN ACCORDANCE WITH ASTM C990
 MANHOLE STEPS: ASTM C478
 REINFORCEMENT TO ASTM A615, A497, GRADE 60
 CONCRETE TO BE MIN. 5000 PSI @ 28 DAYS
 AIR ENTRAINED 5%-8%
 INVERT OPENINGS AS SPECIFIED
 BASE UNITS AVAILABLE EXTENDED OR NON-EXTENDED

UPDATED 03/16/10