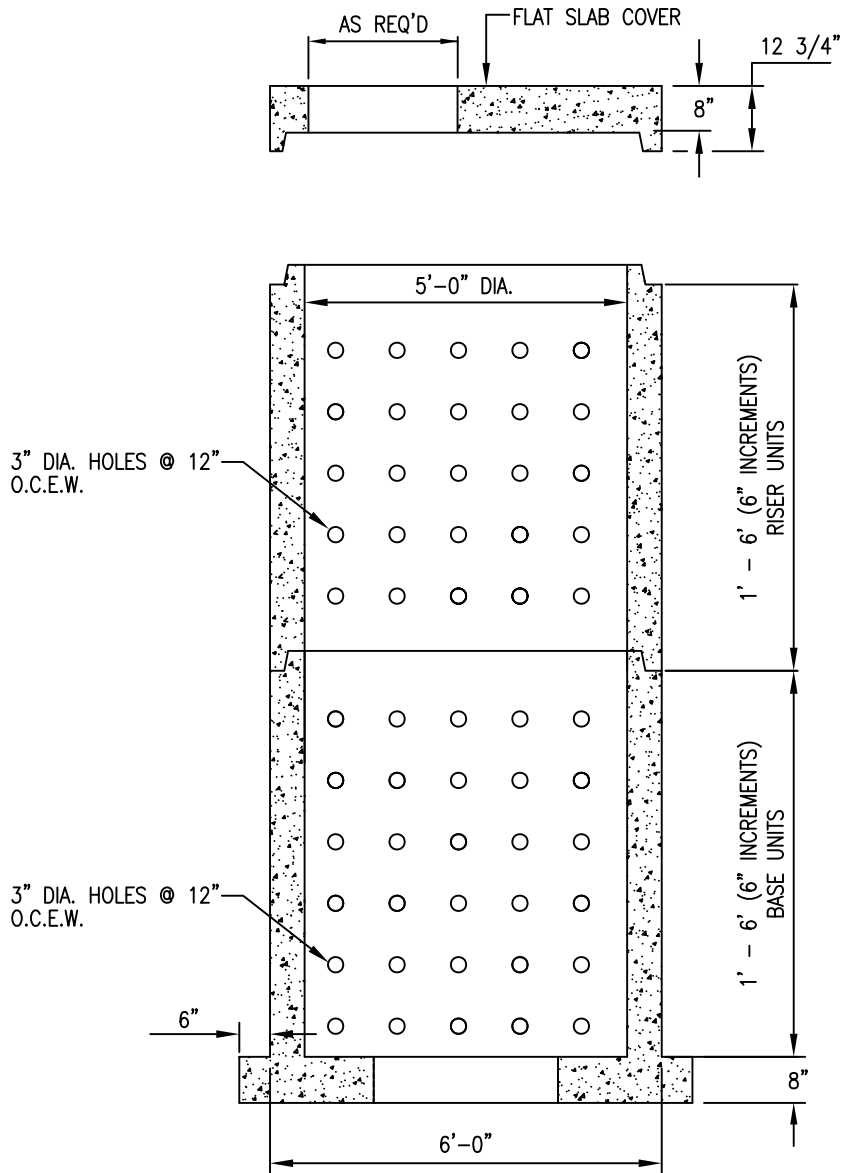


# JEFFERSON CONCRETE CORP.

22850 MURROCK CIRCLE  
WATERTOWN, NY 13601  
TEL (315)788-4171 FAX (315)788-7958  
www.jeffersonconcrete.com

## 60" DIAMETER DRYWELL



### GENERAL NOTES:

BUILT IN ACCORDANCE TO ASTM C478  
REINFORCEMENT STEEL ASTM A497/A615 GRADE 60 WWF  
CONCRETE TO BE MIN. 5000 PSI @ 28 DAYS  
AIR ENTRAINED 5%-8%  
INVERT LOCATION AND SIZE AS PER PLANS

UPDATED 12/27/10