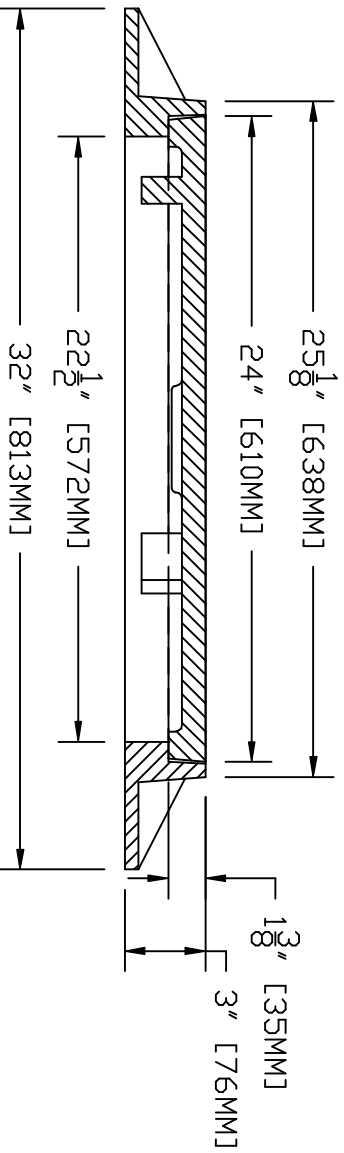


$\phi 29\text{-}1/4$ " [743MM] C.C.
 (TYPICAL)

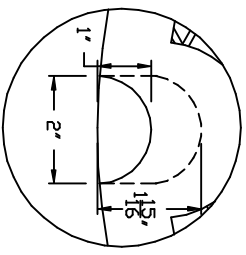
NON-PENETRATING
 PICKHOLE
 <SEE DETAIL>




SECTION A - A

NOTES:

- 1.) MATERIAL SHALL BE GRAY CAST IRON CONFORMING TO A.S.T.M. A48 (LATEST REVISION) CLASS 30B.
- 2.) UNITS DESIGNED HEAVY DUTY FOR A.A.S.H.T.O. HS20-44 WHEEL LOADS.
- 3.) EACH FRAME AND COVER SHALL HAVE MACHINED HORIZONTAL BEARING SURFACES.
- 4.) DIMENSIONS ARE APPLIED USING SOFT CONVERSION. ALL DIMENSIONS IN BRACKETS ARE MILLIMETERS.



NON-PENETRATING
 PICKHOLE DETAIL

#1007AC FRAME & COVER "SANITARY SEWER" - CAST IRON			
DRAWING # 060201-B			
FILE #	1007475C-1007564PC	DATE: 06/04/01	Revised: 09/22/01
Drawn By: ARO	Revised By: ARO	DATE: 06/04/01	Revised: 09/22/01
			
SYRACUSE CASTINGS SALES CORP. P.O. Box 1821 / 6177 South Bay Rd. Cicero, N.Y. 13039 315-699-2601 Fax # 315-699-2982 www.syrcast.com			